

## SIGN ME UP!

Name(s) \_\_\_\_\_

- I/we would like a CD copy of this week's sermon.  
(Please contact the church office about copies from previous weeks.)
- I/we would like to be added to the monthly newsletter.  
Please fill out the other side and check here if you would prefer to receive it in email.
- I/we would like to be receive the weekly calendar of events email.
- I/we would like to be contacted by a Deacon to arrange a ride to church next week.
- I/we would like more information about the Quilters on Tuesday mornings.
- I/we would like more information about available Bible studies.
- I/we would like more information about the music ministry/ choir and how I/we can get involved.
- I/we would like to help with Sunday School.
- I/we would like to teach Sunday School.
- I/we would like more information about the youth ministry.
- I/we would like to have a pastor or elder call me/us.
- I/we would like to be contacted regarding ways I/we could volunteer in the church.
- I/we would like a call when worship services are cancelled due to weather.
- I/we would like an email when worship services are cancelled due to weather. Please put your email address on the front of this form.

Prayer Request:

- I would like this prayer to only go to a pastor or an elder.

Tear here

## YOUTH & FAMILY LIFE NEWS

- ✝ **Fall Fundraiser:** Calendars(\$10), cards(\$8), and notepads (\$2) are still available.
- ✝ **Wolia:** Don't forget to bring \$1 each week for Wolia!
- ✝ **Confirmation:** January 11<sup>th</sup> & 25<sup>th</sup> from 1 - 3 PM.
- ✝ **No Sunday School** until January 11<sup>th</sup>.
- ✝ **No Youth Group** on December 31<sup>st</sup>, see you January 7, 2009 - movie night!
- ✝ **Spirit Skate:** 6:30 - 8:30 PM at Super Skate.  
Jan. 15<sup>th</sup>, Feb. 19<sup>th</sup>, Mar. 19<sup>th</sup>, Apr. 16<sup>th</sup>
- ✝ **Chris Tomlin Hello Love Tour:** Chris Tomlin will be leading a night of worship at the U.S. Cellular Center in at 7 PM on Friday January 30<sup>th</sup>. Tickets are \$25 each.
- ✝ **Sunday Evening Meal:** the youth will be serving the meal on Feb. 1<sup>st</sup> from 4 - 6 PM, at 1<sup>st</sup> Presbyterian Church, CR.

### Questions?

#### Want more information?

Please call, text or email Terry.  
Church: 363-0067 — Cell: 361-3825  
Email: youthandfamily@huschurch.org  
Online at [www.180yfl.huschurch.org/](http://www.180yfl.huschurch.org/)



The Cedar Rapids Concert Chorale is holding auditions for its 50th Anniversary Year spring semester on January 6th and 13th. Auditions begin at 6:30 PM at First Lutheran Church in Cedar Rapids and will consist of scales, range, ear training, and some simple sight-reading. Rehearsals are every Tuesday from 7:00 - 9:30 PM, September through May, and the chorale performs 4 to 5 concerts each year; two are typically with the Cedar Rapids Symphony. Please contact us at (319) 365-8221 or via email at [crchorale@hotmail.com](mailto:crchorale@hotmail.com) to schedule your 10 minute audition!

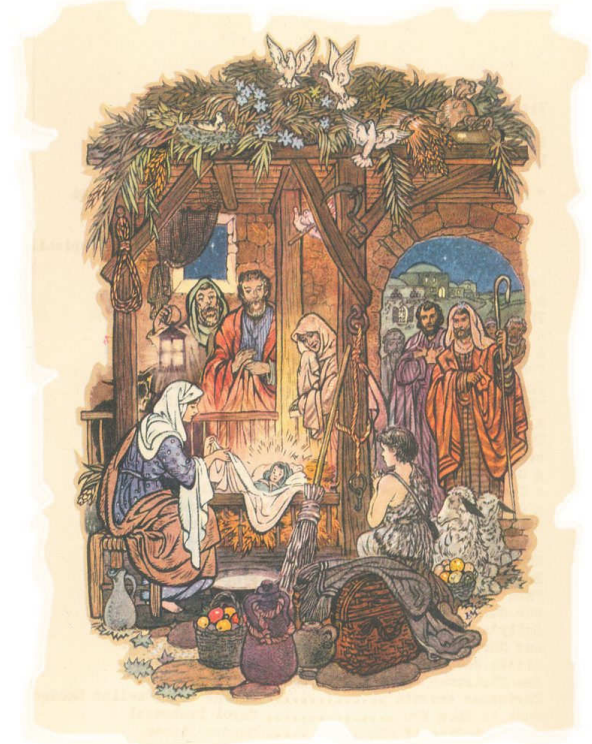
Christ  
IS Born!



# HUS PRESBYTERIAN CHURCH

## SHARING THE BLESSINGS

Worship Service – 9:30 AM, December 28, 2008



1946 Hus Christmas musical bulletin cover

All Members, Ministers;  
Ruth Halterman, Organist; Lisa McAtee, Secretary;  
Doug Page, Worship Leader and Music Minister;  
Terry Van Wyk, Youth and Family Life Minister.

### THE HUS CHURCH PURPOSE

Inviting Seekers To Become Believers  
Equipping Believers To Become Disciples  
And Inspiring Disciples To Become Servants

Hus E-mail address: [huschurch@huschurch.org](mailto:huschurch@huschurch.org)  
Website: [www.huschurch.org](http://www.huschurch.org)

# THE WORSHIP OF GOD

Sunday, December 28, 2008

Prelude

Welcome and Announcements

\* Hymn "The First Noel" #156

Advent Candle Lighting Ceremony

\*Songs Of Praise, "Joy to the World"

Grace, & Love "The Reason Why"

"Emmanuel"

\*Greeting One Another

Children's Moment

Prayer of Illumination

Scripture Lesson Luke 1: 26-38

Meditation Song "Mary Did You Know?"

Soloist: David Raim

Sermon "What Did Mary Know?"

Teaching by Pastor Mel Ramos

Offering Our Gifts And Ourselves To God

Song For Sharing

"O Little Town of Bethlehem" #171

\*Doxology (to the tune of #544 in the hymnal)

\*The Peace Of Christ

Agape Time

Prayer of Thanksgiving and The Lord's Prayer

A Song For Serving "Lord I Lift Your Name on High"

The Sending And Benediction

Choral Benediction "Amen Lord"

Postlude

\*Those who are able may stand

All hymns are from the red hymnal unless otherwise noted.



**ALL FIRST TIME VISITORS! YOU ARE OUR GUESTS!**

God loves a cheerful giver, but as our guest you are not obligated to give to the offering.

**All worship expressions are welcome here!**

Raise or clap your hands in praise, dance, shout

"Amen," or humbly meditate in subdued reflection.

The service is over an hour, so please sit or stand as needed.

♪♪♪ SONG SHEETS (WITH THE WORDS TO SONGS) FOR THIS SERVICE ARE AVAILABLE FROM THE USHERS. ♪♪♪

All songs sung and/or printed through CCLI License #1145724 or Public Domain.



## THIS WEEK AT HUS

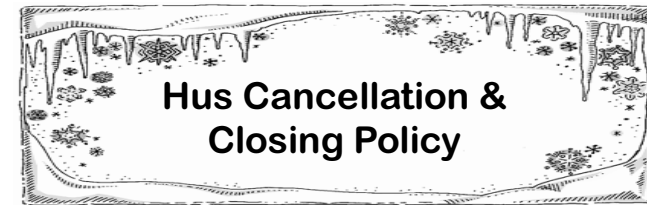
Dec 29 <sup>th</sup>	Youth Ministry Prayer	7:00 PM
Dec 30 <sup>th</sup>	Quilter's	8:30 AM
Dec 31 <sup>st</sup>	New Years Eve	11:00 PM
Jan 1 <sup>st</sup>	New Years Day - office closed	
Jan 2 <sup>nd</sup>	Office closed	
Jan 4 <sup>th</sup>	Worship Service	9:30 AM

Pastor Mel Ramos teaching

## UPCOMING EVENTS.

- No Sunday School, Dec. 28<sup>th</sup> & Jan. 4<sup>th</sup>.
- No Youth Group, Dec. 31<sup>st</sup>.
- No Wednesday night meal or regular choir practice, Dec. 31<sup>st</sup>.

<u>Giving - Dec 21, 2008</u>	<u>December 2008 Giving</u>
To General Fund: \$1,302.00	To General Fund: \$4058.25
Benevolence: \$31.00	Benevolence: \$112.00
Other: \$170.00	Other: \$1170.00
Loose: \$15.00	Loose: \$30.00
Matthew 25: \$25.00	Matthew 25: \$260.00
Per Capita: \$27.00	Per Capita: \$27.00
# of Givers: 17	Average # of Givers: 25



Closings or cancellations will be posted on the Hus website ([www.huschurch.org](http://www.huschurch.org)) and on KCRG, KWWL, and KGAN. Please note that the church website should be the first place to check as it can take the media time to get the information on air and on their websites. **Expect a call from a church representative only if you have requested a personal call.** To request a call, please contact the church office (319.363.0067). If you would like to receive an email notification, please let the office know.

\*The complete policy is available on the table in the back of the narthex or online at [www.huschurch.org](http://www.huschurch.org).

## Welcome

December 28, 2008

We're glad you're here today.

Please fill out this stub and place it in the offering plate.

Name \_\_\_\_\_

Address \_\_\_\_\_

Phone \_\_\_\_\_

E-Mail \_\_\_\_\_

- Check if this is new information
- Please check if you do not have offering envelopes and would like to have them.

### Please Check One:

- First-time guest
- Where did you hear about our church?  
\_\_\_\_\_
- Returning Guest
- Here for special occasion
- Member
- Regular Attendee

### I'd like to learn what it means:

- to commit my life to Christ
- to be a more devoted follower of Christ

Your comments:

Tear here